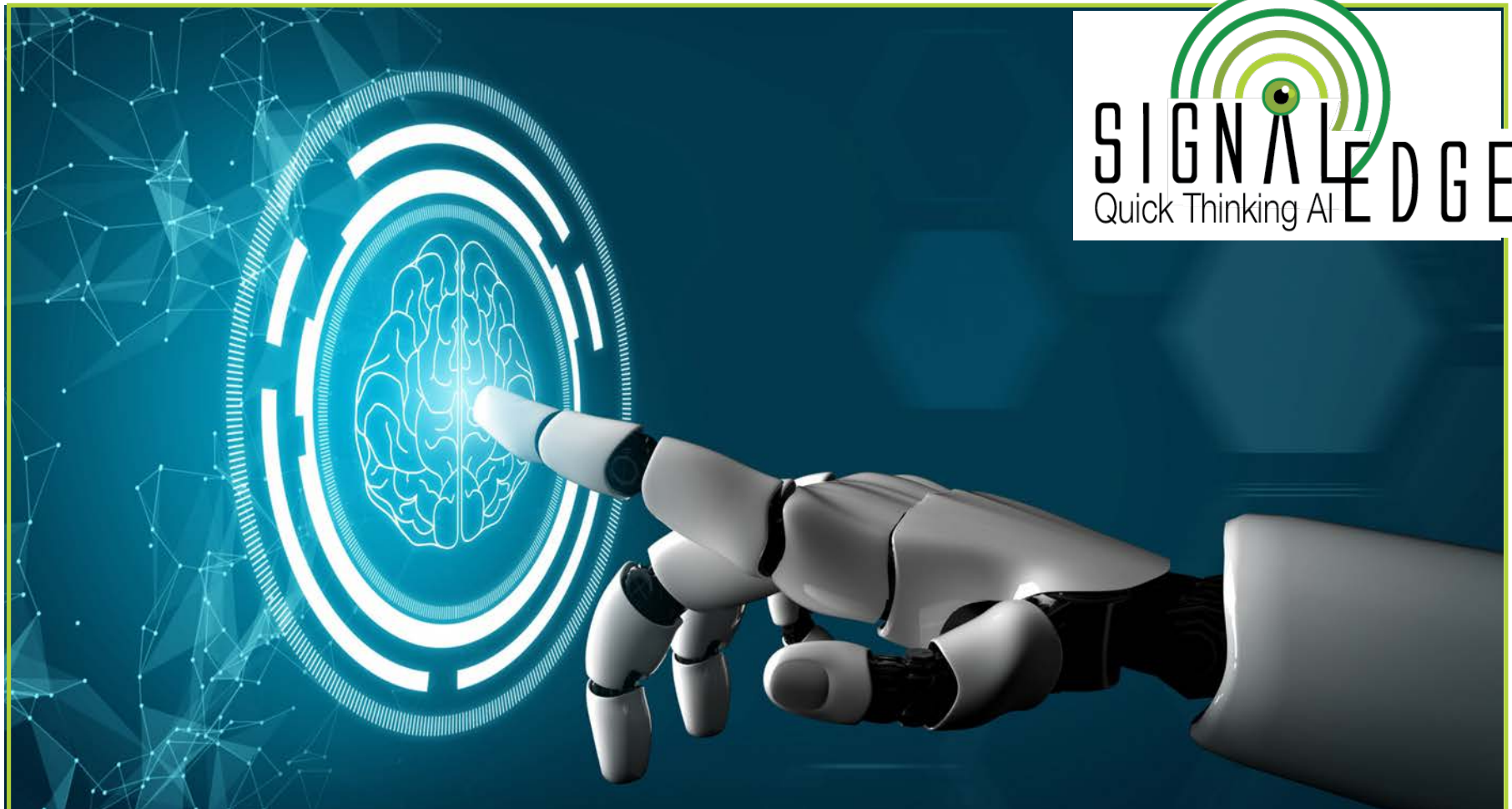


**Introduction to David Edgar:** I would like to introduce to you David Edgar, Chief Technical Officer for Signal Edge. Scientist and Author, David was one of the original email pioneers and the father of the Data Distribution Service Standard, building software for 1000's of clients including World Bank, the Department of Defense, Microsoft, Associated Press, and the White House.



Good afternoon, I am Dave and we are Signal Edge and are located in the beautiful and enduring city of Baltimore, Maryland.

**The AI Thought Model**  
A New Bio-Inspired Form of Artificial Intelligence

**SIGNAL EDGE**  
Quick Thinking AI

**Energy Efficient**  
**Real-time Awareness**  
**Fast Learner**

**Full Automation**  
**Adaptable**  
**Human-Level**

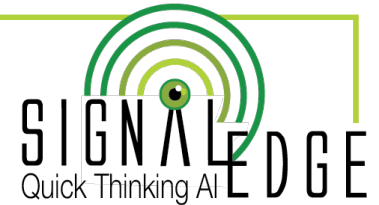
**NEURO-SYMBOLIC AI**

Neuro-Symbolic AI is not a Language Model; it doesn't talk, it thinks. Our brain-based approach generates differentiators that will uniquely separate our solutions from the rest of the marketplace. We will go where they cannot.

**Three products:** **BytewiseIoT™** is a network appliance that optimizes the data and prepares it for real-time. This product is available now.

## Products

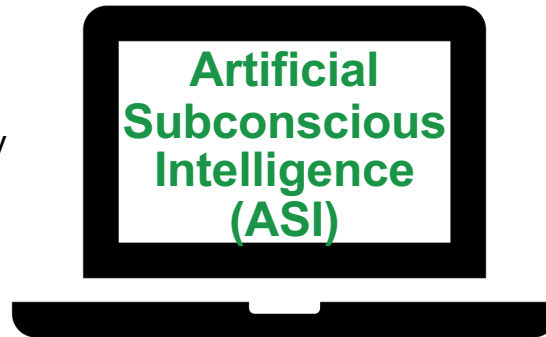
Our first three products based on the brain's algorithm are:



### Bytewise IoT™

Network equipment that creates real-time data by eliminating 99.9% of its size through our patent pending motion decimation process.

**Status: Available**

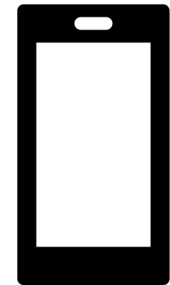


### Artificial Subconscious Intelligence (ASI)

Device that consumes real-time data to produce thoughts through translation and automation.

**Status: Q4 2024**

### Cognitive Object Interface



GUI that interfaces our ASI with a user allowing full comprehension of the computer data in real-time.

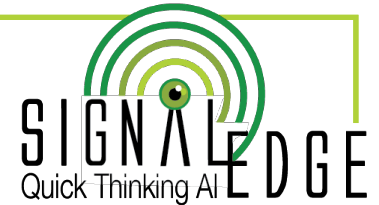
**Status: Q1 2025**

Second is **Artificial Subconscious Intelligence** which converts the real-time data into thoughts. This product will be available later this year.

Third is the **Cognitive Object Interface**. It allows users to tap into the thoughts to produce awareness and perform training. This product will be available early next year.

Everybody is talking about AI. The hype is reaching a fevered pitch. The business leaders are listening and they are looking for answers.

## Market Opportunity



Market Projections in Artificial Intelligence (AI)	2024 in Billions US Dollars	2030 in Billions US Dollars	CAGR Compound Annual Growth
<b>AI</b>	\$305.9	\$738.8	15.83%
<b>AI in IoT</b>	\$82.1	\$153.1	6.4%
<b>AI in Robotics</b>	\$19.01	\$36.78	11.63%

***“Human reasoning and knowledge is mostly not encoded in language, it is in mental models.”***

— Yann LeCun: Award winning French-American computer scientist working in machine learning, computer vision, mobile robotics and computational neuroscience. Silver Professor of the Courant Institute of Mathematical Sciences at NYU and Vice-President, Chief AI Scientist at Meta

***“I do not believe human-level AI (artificial superintelligence or the commonest sense #AGI) is close at hand.”***

— Christopher Manning: Computer scientist and applied linguist whose research in the areas of natural language processing, artificial intelligence and machine learning is considered highly influential. He is the current Director of the Stanford Artificial Intelligence Laboratory.

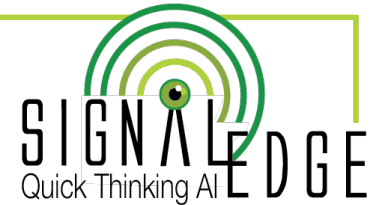
***“Large Language Models (LLMs) by themselves simply aren’t capable of fact-checking or systematic reasoning. Hence hallucinations.”***

— Gary Marcus: American psychologist, cognitive scientist, and author, known for his research on the intersection of cognitive psychology, neuroscience, and artificial intelligence. Professor emeritus of psychology and neural science at NYU.

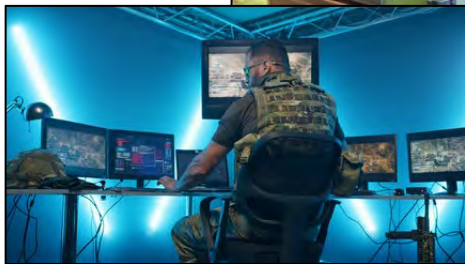
But all the experts agree, the current language model will not achieve human-level. It has major roadblocks. Now is the perfect time and opportunity for our thought model to supply the missing piece.

Signal Edge is currently targeting two market segments: **Medical and Military**.

## Market Segments



<b>Medical</b>	<b>2024</b> in Billions US Dollars	<b>2029</b> in Billions US Dollars	<b>CAGR</b> Compound Annual Growth
<b>Sensor Market</b>	\$7.76	\$12.63	10.24%
<b>AI Health Care Market</b>	\$20.9	\$148.4	48.1%



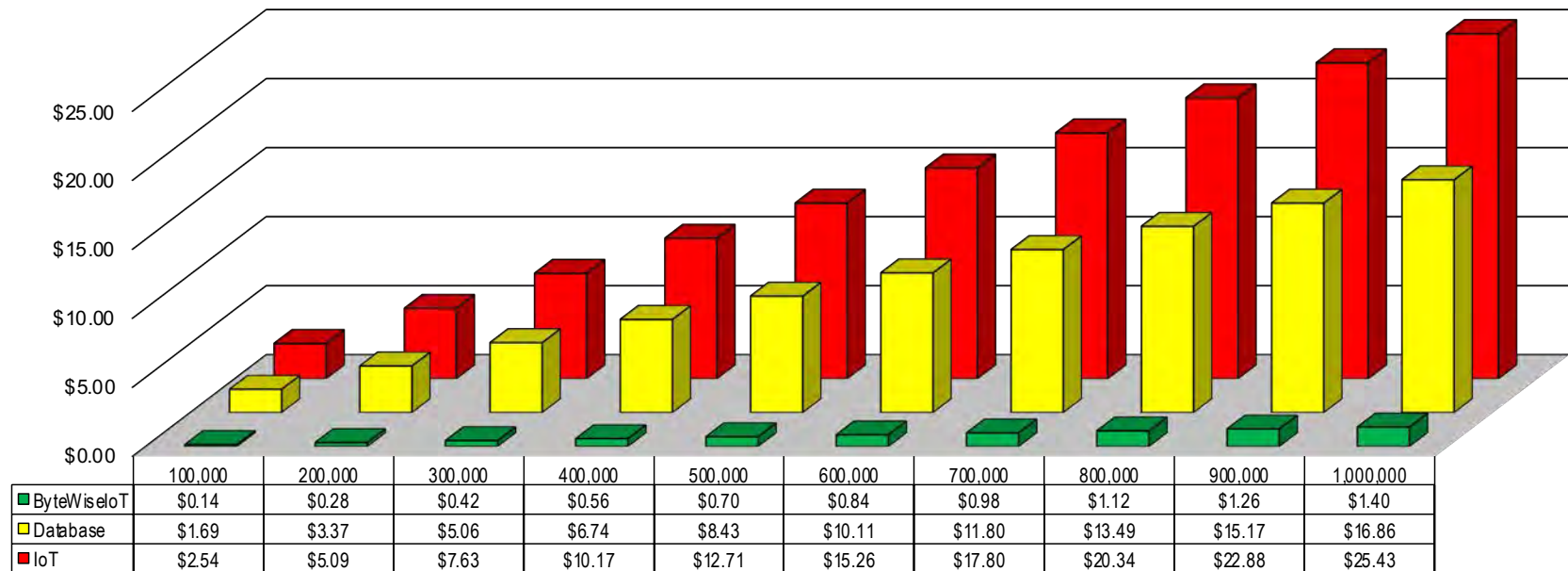
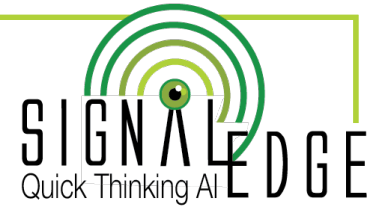
<b>Military</b>	<b>2024</b> in Billions US Dollars	<b>2029</b> in Billions US Dollars	<b>CAGR</b> Compound Annual Growth
<b>Sensor Market</b>	\$15.76	\$21.25	6.61%
<b>AI Military Market</b>	\$9.2	\$38.8	33.3%

Both segments are on fire with incredible growth numbers. Perfect candidates for our technology. Our thought model will revolutionize their practices with capabilities far beyond our competition.

And the revolution begins by solving the big problem, our data is this big, but our window for real-time is this big. **BytewiseIoT™** creates a quantum entanglement inside of a time-tunnel to resonate the data's motion.

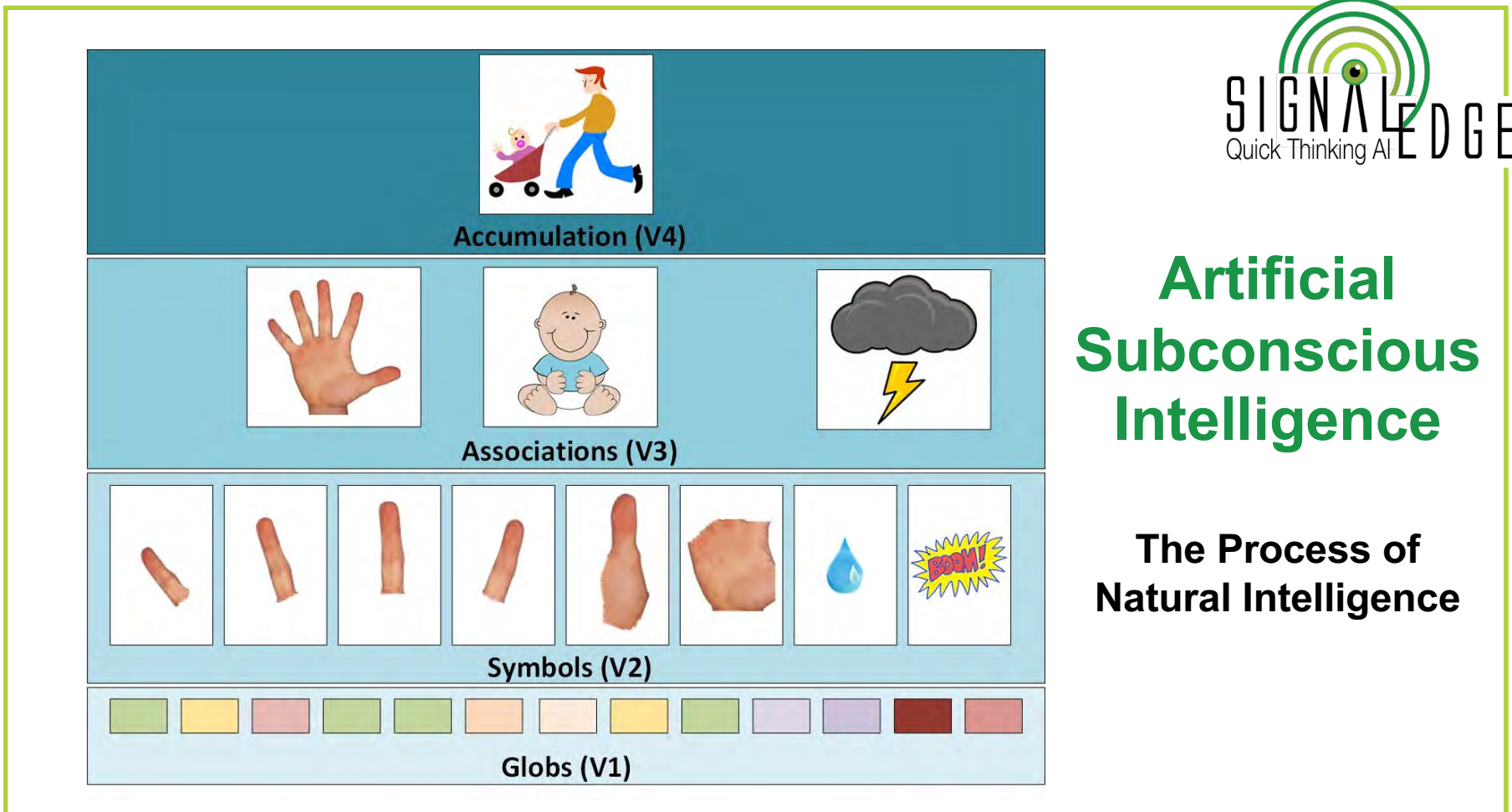
# BytewiseIoT™

## Quantum Tunneling



As crazy as that sounds, it works. **10,000% increase in data efficiency.** It is the difference between talking and thinking. To talk requires sending every word, to think transfers knowledge without words.

The real-time data feeds into our **Artificial Subconscious Intelligence**. It is a translator that converts general intelligence to symbolic intelligence. General intelligence is the language of the physical system. It's FedEx, it gets the package there on time.



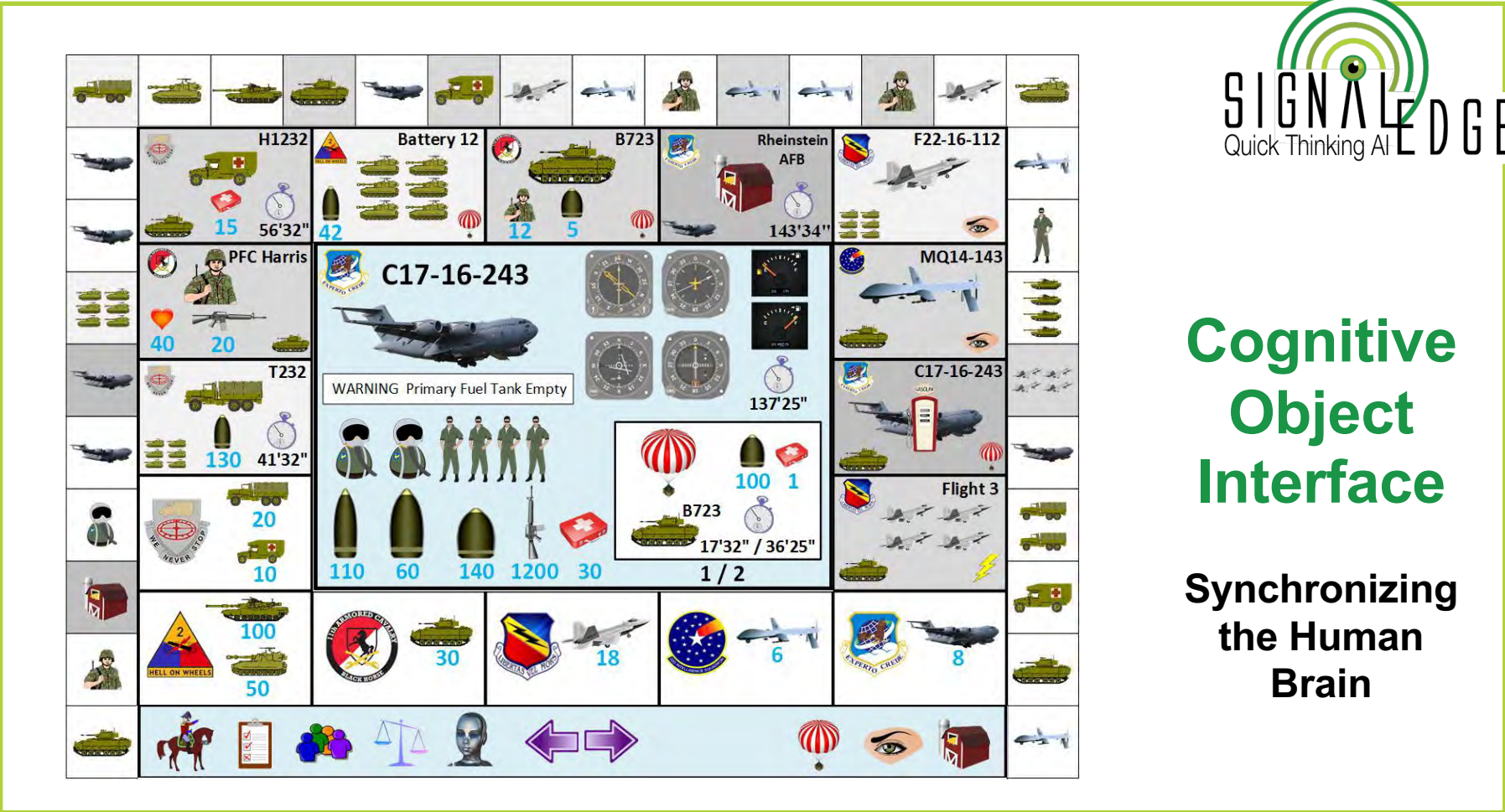
Symbolic intelligence is what we use to look into the package. Symbols have associations and are organized by activity. Two systems of intelligence working together from bottom-up and top-down to produce thoughts.

The thoughts are then feed into our **Cognitive Object Interface (COI)**. It allows a user to comprehend the thoughts. Any activity can be depicted and the user simply plays a game by matching symbols, changing tiles, and selecting actions.



# Cognitive Object Interface

Synchronizing the Human Brain



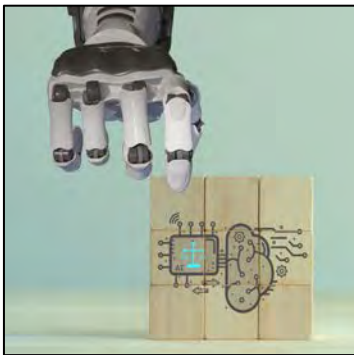
Neuro-Symbolic AI is not based on math. The system learns by recording the cause and effect of the actions. The intelligence is then encoded into physical system itself. It's just like teaching your body to ride a bike.

But it is not without its risk. The world is addicted to very expensive AI; Trillion-dollar valuations, unlimited sales, chips in every pot. Some will be resistant. To counter, we plan to position our product as an add-on to the LLM taking their knowledge and converting it to actual intelligence.

## Risks

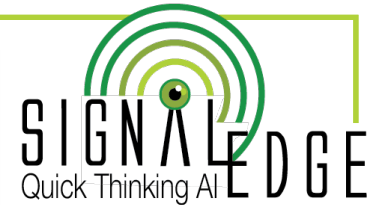
### 1. Addiction to Expensive AI

- Large Language Models (LLMs); Trillion dollar valuations, Unlimited hardware, software and service sales
- Position as an LLM add-on that converts their knowledge to actual intelligence



### 2. Ethical Boundaries

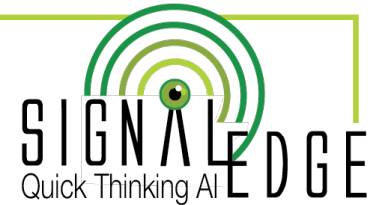
- Regulating the algorithm of life
- Software license enforcement



There are ethical concerns. We are talking about the algorithm of life, the power of creation. So, our plan is to implement an ethical use clause in our licensing agreement and empanel an ethics committee to establish guidelines, render judgement, and aggressively prosecute violators.

We are organized where our technology feeds our market segment teams allowing them to focus applications and sales. Our technology plays well with others, so we will see a lot of partnerships.


## Go to Market Strategy



- 1. Market Segment Teams**
- 2. Partnerships**
- 3. End-User Marketing**
- 4. Education Initiatives**
- 5. Enhanced Support**

We will market our uniqueness to the end-users and allow them to experience the difference. Education is key and it will be intertwined with support. Deployed systems learn just like children and best practices need to be established and knowledge shared.

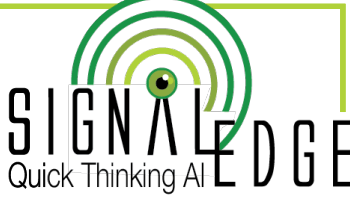
But what is really comes down to is selling to the customer's goals. Force multiplication is our beachhead. Improving employee efficiency is a path well known and with it, we can deliver on all their goals.



# The AI Customer

**Goals**

- Force Multiplication**
- Reduced Costs**
- Process Automation**
- Cost-Effective**
- Environment Friendly**



**SIGNAL EDGE**  
Quick Thinking AI

**Risks**

- Plagiarism**
- Hallucinations**
- Lacks Transparency**
- Expensive**
- Environment Damage**

And their risks, become our differentiators. We do not suffer from these maladies. This last one disturbs me most. Have you looked at Loudoun County Virginia lately, data centers popping up like daisies. Each with the energy and water requirements of a small town. Yet, the entire data center produces less intelligence than the uninvited fruit-fly cruising the next room looking for a meal.

So, we can talk about the past or we can think about the future.

Thank you.



For more information  
**SignalEdgeCorp.com**  
**410.522.3109**

